

# 2<sup>nd</sup> Meeting of the PCREEE Steering Committee

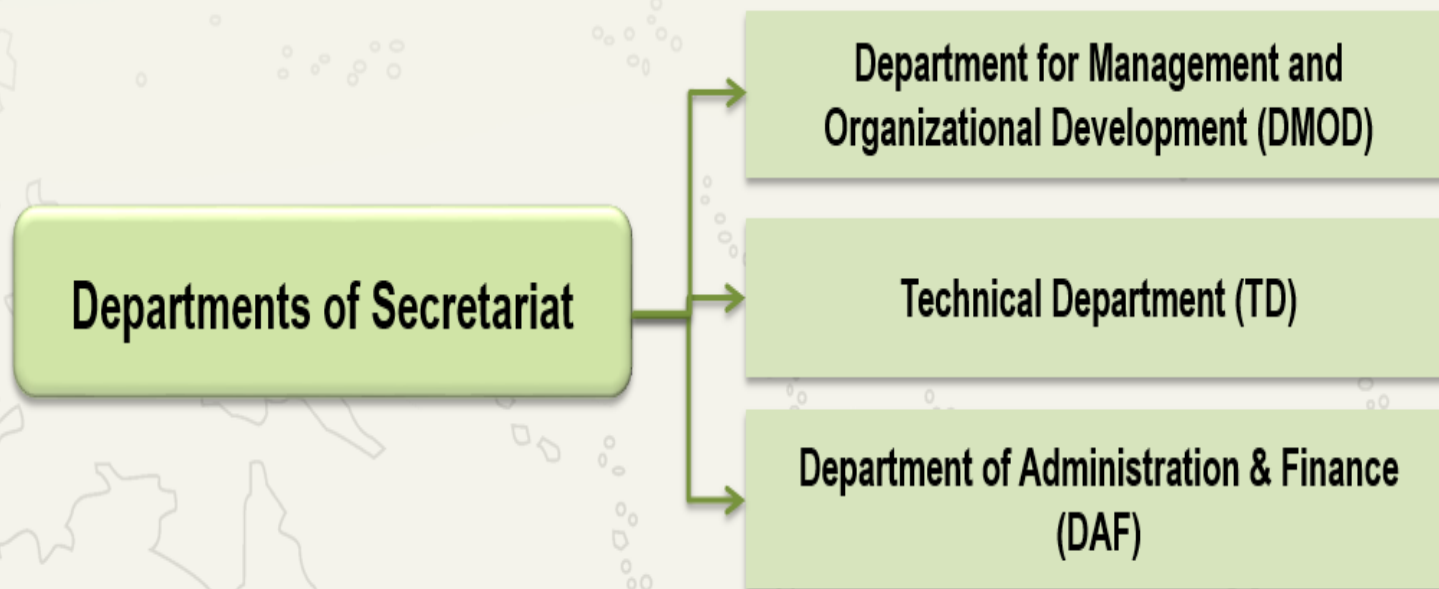
## Staffing of the PCREEE



Austrian  
Development Cooperation

Prepared by Mr. Solomon Fifita, Manager - PCREEE

# Organizational Chart of Secretariat



## Organisational Chart of PCREEE (2016 to 2020)

Department for Management and Organizational Development (DMOD)

Use of flexible and innovative staff arrangements to respond to the need to sever private sector and countries

Based in Tonga

Director of PCREEE

SIDS DOCK Coordinator

Centres Coordinator (UNIDO HQ)

SIDS Centres Focal Points (CCREEE, ECREEE)

Technical Department (TD)

Based in Tonga

Sustainable Energy Private Sector Expert (UNIDO funded)

Renewable Energy Expert (Seconded by Tonga)

Energy Planner (Energy Efficiency) (Seconded by Tonga)

Energy Efficiency Expert (also serving as Tonga's PALS Coordinator)

Capacity Development Expert (also serving as Tonga's PACTVET In-country Coordinator)

Other project staff, secondments and consultants

Based in Suva

Renewable Energy Expert (SPC North REP Team Leader in Pohnpei)

Energy Efficiency Expert (SPC PALS Project Manager)

Capacity Development Expert (SPC PACTVET Team Leader)

Data Base Officer (SPC EDD Energy)

Communication Assistant (SPC EDD Energy)

Department of Administration and Finance (DAF)

Based in Tonga

Administration and Finance Officer

Administrative Assistant

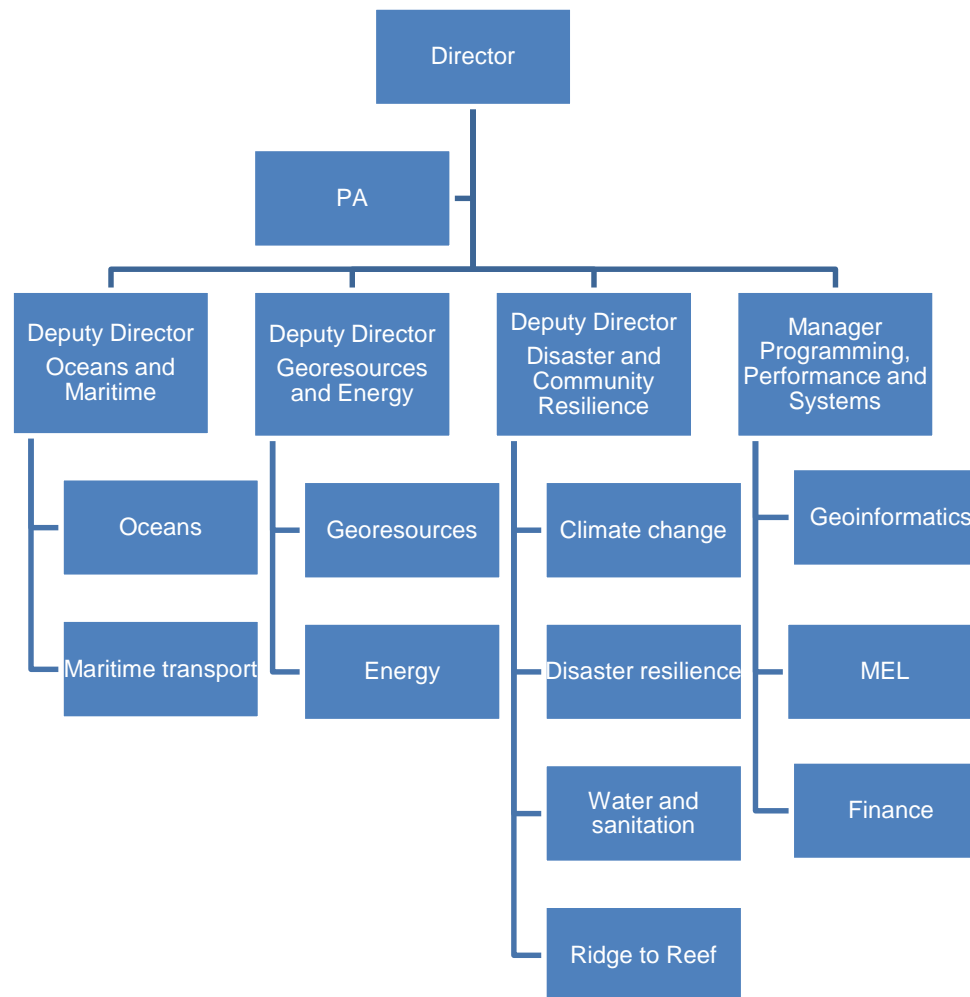
Based in Suva

Senior HR Generalist

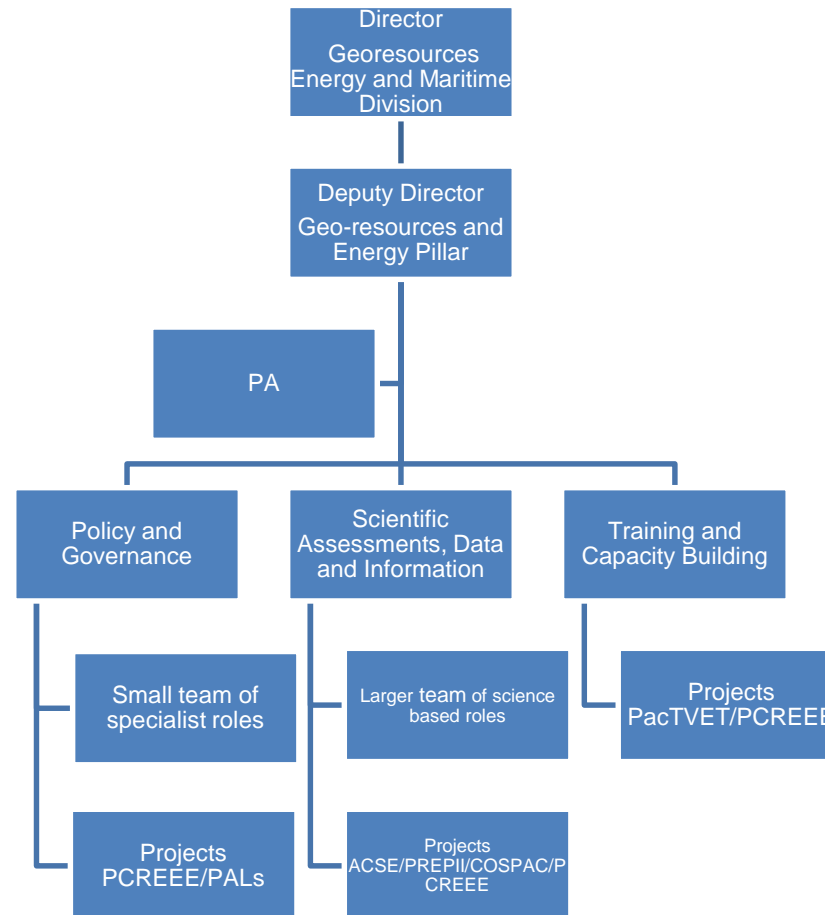
Acting Administration Manager

Finance Officer

# PCREEE as part of the Pacific energy architecture



# PCREEE as part of the Pacific energy architecture



# Recommendations

- Noted the staffing structure and the need for extra staff at the PCREEE
- Note the integration of the other staff of SPC, mostly in Suva, with the PCREEE
- Encouraged member countries and partners to use the centre as a base for training, research, internships and etc.

# MALO 'AUPITO