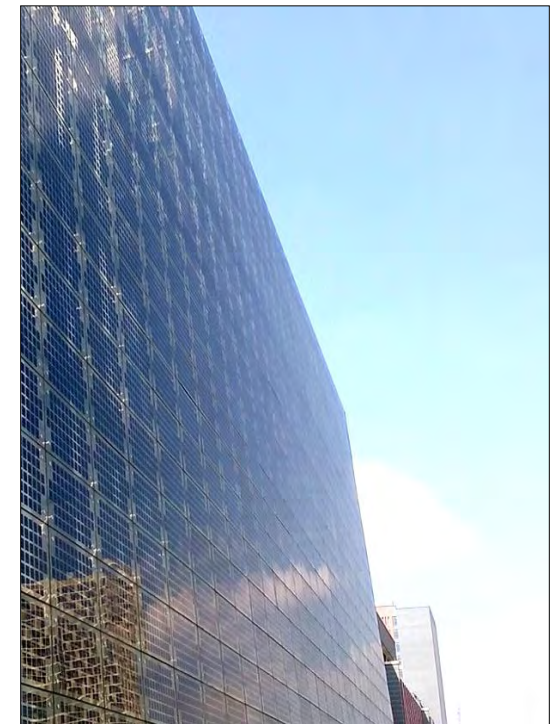


Pacific Centre for Renewable Energy and Energy Efficiency

SE4ALL Centre of Excellence to Promote Sustainable Energy Markets, Industries and Innovation

PCREEE Sustainable Energy Research Support Fund



CONTACT DETAILS:

PCREEE Secretariat

Top Floor O.G. Sanft's Building,

Nuku'alofa, Tonga

Phone: +676 25209

Email: Info@pcreee.org

Website: www.pcreee.org





Background

The Pacific Centre for Renewable Energy and Energy Efficiency (PCREEE) was established in Nuku'alofa, Tonga in April 2017. Its objective is to improve access to modern, affordable and reliable energy services, energy security and mitigation of negative externalities of the energy system (e.g. local pollution and GHG emissions), by promoting renewable energy and energy efficiency investments, markets and industries in PICTs. The Pacific Community is the hub for the PCREEE while the University of the South Pacific is its spoke for training and research.

One of the Outcomes of the PCREEE is Strengthening the Capacities of the local industry and business sector on various RE & EE aspects through the up-scaling and replication of certified training and applied research programs and mechanisms. One of the outputs for this Outcome is Applied science research networks and technology transfer with high relevance for the local business and industry sector are promoted. It is in this context that this PCREEE Sustainable Energy Research Support Fund intends to invoke unique innovative minds and entrepreneurial skills of PICTs students in tertiary institutions to take part in the effort to enhance the productivity of key industries with high job leverage (e.g. agriculture, tourism, fishery, manufacturing, creative industry) and the creation of a local sustainable energy servicing and manufacturing industry.

PCREEE Sustainable Energy Research Support Fund

Criteria:

- Applicant must be a national of a SPC member country and currently enrolled in a Post-Graduate, Master's or PhD programme.
- Ability to work independently and excellent report writing skills.
- Research topic must be based on a community, application or industry in a SPC member country.
- Researchers are encouraged to incorporate issues relating to poverty alleviation, gender equity and children welfare as well as climate change in their research.
- The support fund of 2,500 Euro per selected research will complement other funds for the students' research effort. Applications must include a detailed breakdown of costs clearly stating items to be covered by PCREEE and how it complement other funds available to the student. Eligible costs include accommodation while doing data collection, local transportation, costs of hiring a research assistant (if applicable), printing and publication.
- The research topic and budget must have the prior approval of the applicant's supervisor.
- PCREEE must have access to all research data and information and copies of the completed research paper.

Depending on the completion of the research, extra support may be provided to enable the researcher to present his/her research findings at relevant national and regional meetings and events.

Duration and Supervision

The research duration will depend on the research content and the requirements of the university. It is expected that the student will be supervised by their nominated academic referee and will have access to supervision from the PCREEE, if needed.

Applications

Each application must include the university-approved research proposal and must be submitted electronically to: Dr. Atul Raturi (atul.raturi@usp.ac.fj) and a copy to Solomon Fifita (Solomone F@spc.int).

Further enquiries should be directed to the contacts mentioned above.

